

Version 11d Last updated 3 May 2022

ab137994 TAT Complexes Mouse ELISA Kit

For the quantitative measurement of mouse TAT Complexes in plasma and cell culture supernatants.

This product is for research use only and is not intended for diagnostic use.

Table of Contents

1. Overview	1
2. Protocol Summary	2
3. Precautions	3
4. Storage and Stability	3
5. Limitations	4
6. Materials Supplied	4
7. Materials Required, Not Supplied	5
8. Technical Hints	6
9. Reagent Preparation	7
10. Standard Preparation	10
11. Sample Preparation	12
12. Plate Preparation	13
13. Assay Procedure	13
14. Typical Data	15
15. Typical Sample Values	16
16. Assay Specificity	16
17. Species Reactivity	17
18. Troubleshooting	18
19. Notes	21
Technical Support	22

1. Overview

TAT Complexes Mouse in vitro ELISA (Enzyme-Linked Immunosorbent Assay) kit is designed for the quantitative measurement of TAT Complexes levels in plasma and cell culture supernatants.

A TAT Complexes specific antibody has been precoated onto 96-well plates and blocked. Standards or test samples are added to the wells and subsequently a TAT Complexes specific biotinylated detection antibody is added and then followed by washing with wash buffer. Streptavidin-Peroxidase Conjugate is added and unbound conjugates are washed away with wash buffer. TMB is then used to visualize Streptavidin-Peroxidase enzymatic reaction. TMB is catalyzed by Streptavidin-Peroxidase to produce a blue color product that changes into yellow after adding acidic stop solution. The density of yellow coloration is directly proportional to the amount of TAT Complexes captured in plate.

Thrombin-antithrombin (TAT) complexes formed following the neutralization of thrombin by antithrombin III (ATIII) have been used as a surrogate marker for thrombin generation. High plasma levels of TAT complexes have been suggested to alter hemostatic activation in argentine hemorrhagic fever, chronic dialysis patients, and toxemia of pregnancy. Whereas low plasma levels of TAT complexes are found in type 1 (insulin-dependent) diabetes, neonatal respiratory distress syndrome, and primary untreated cancer. TAT complexes are a useful marker to predict morphological changes in chronic aortic dissection.

2. Protocol Summary

Prepare all reagents, samples, and standards as instructed



Add standard or sample to appropriate wells.

Incubate at room temperature.



Wash and add prepared biotin antibody to each well. Incubate at room temperature.



Wash and add prepared Streptavidin-Peroxidase Conjugate. Incubate at room temperature.



Add Chromogen Substrate to each well. Incubate at room temperature



Add Stop Solution to each well. Read immediately.

3. Precautions

Please read these instructions carefully prior to beginning the assay.

- All kit components have been formulated and quality control tested to function successfully as a kit.
- We understand that, occasionally, experimental protocols might need to be modified to meet unique experimental circumstances. However, we cannot guarantee the performance of the product outside the conditions detailed in this protocol booklet.
- Reagents should be treated as possible mutagens and should be handled with care and disposed of properly. Please review the Safety Datasheet (SDS) provided with the product for information on the specific components.
- Observe good laboratory practices. Gloves, lab coat, and protective eyewear should always be worn. Never pipet by mouth. Do not eat, drink or smoke in the laboratory areas.
- All biological materials should be treated as potentially hazardous and handled as such. They should be disposed of in accordance with established safety procedures.

4. Storage and Stability

Store kit at +4°C immediately upon receipt, apart from the SP Conjugate & Biotinylated Antibody, which should be stored at -20°C. Kit has a storage time of 1 year from receipt, providing components have not been reconstituted.

Refer to list of materials supplied for storage conditions of individual components. Observe the storage conditions for individual prepared components in the Materials Supplied section.

5. Limitations

- Assay kit intended for research use only. Not for use in diagnostic procedures.
- Do not mix or substitute reagents or materials from other kit lots or vendors. Kits are QC tested as a set of components and performance cannot be guaranteed if utilized separately or substituted.

6. Materials Supplied

Item	Quantity	Storage Condition
TAT Complexes Microplate (12 x 8 wells)	96 wells	4°C
TAT Complexes Standard	1 vial	4°C
10X Diluent M Concentrate	30 mL	4°C
Biotinylated Mouse TAT Complexes Antibody	1 vial	-20°C
100X Streptavidin-Peroxidase Conjugate (SP Conjugate)	80 µL	-20°C
Chromogen Substrate	7 mL	4°C
Stop Solution	11 mL	4°C
20X Wash Buffer Concentrate	2 x 30 mL	4°C
Sealing Tapes	3	N/A

7. Materials Required, Not Supplied

These materials are not included in the kit, but will be required to successfully perform this assay:

- Microplate reader capable of measuring absorbance at 450 nm.
- Precision pipettes to deliver 1 μ L to 1 mL volumes.
- Adjustable 1-25 mL pipettes for reagent preparation.
- 100 mL and 1 liter graduated cylinders.
- Absorbent paper.
- Distilled or deionized water.
- Log-log graph paper or computer and software for ELISA data analysis.
- 6 tubes to prepare standard or sample dilutions.

8. Technical Hints

- This kit is sold based on number of tests. A 'test' simply refers to a single assay well. The number of wells that contain sample, control or standard will vary by product. Review the protocol completely to confirm this kit meets your requirements. Please contact our Technical Support staff with any questions.
- Selected components in this kit are supplied in surplus amount to account for additional dilutions, evaporation, or instrumentation settings where higher volumes are required. They should be disposed of in accordance with established safety procedures.
- Make sure all buffers and solutions are at room temperature before starting the experiment.
- Samples generating values higher than the highest standard should be further diluted in the appropriate sample dilution buffers.
- Avoid foaming or bubbles when mixing or reconstituting components.
- Avoid cross contamination of samples or reagents by changing tips between sample, standard and reagent additions.
- Ensure plates are properly sealed or covered during incubation steps.
- Make sure you have the right type of plate for your detection method of choice.
- Make sure the heat block/water bath and microplate reader are switched on before starting the experiment.

9. Reagent Preparation

- Equilibrate all reagents to room temperature (18-25°C) prior to use.
- If crystals have formed in the concentrate, mix gently until the crystals have completely dissolved.
- Prepare fresh reagents immediately prior to use.

9.1 1X Diluent M

Dilute the 10X Diluent M Concentrate 1:10 with reagent grade water. Mix gently and thoroughly. *Store for up to 1 month at 4°C.*

9.2 1X Wash Buffer

Dilute the 20X Wash Buffer Concentrate 1:20 with reagent grade water. Mix gently and thoroughly.

9.3 1X Biotinylated TAT Complexes Detector Antibody

- 9.3.1 The stock Biotinylated TAT Complexes Antibody must be diluted with 1X Diluent M according to the label concentration to prepare 1X Biotinylated TAT Complexes Antibody for use in the assay procedure. Observe the label for the "X" concentration on the vial of Biotinylated TAT Complexes Antibody.
- 9.3.2 Calculate the necessary amount of 1X Diluent M to dilute the Biotinylated TAT Complexes Antibody to prepare a 1X Biotinylated TAT Complexes Antibody solution for use in the assay procedure according to how many wells you wish to use and the following calculation:

Number of Wells Strips	Number of Wells	(V _T) Total Volume of 1X Biotinylated Antibody (µL)
6	48	2,500
12	96	5,000

Δ Note Any remaining solution should be frozen at -20°C.

Where:

C_S = Starting concentration (X) of stock Biotinylated TAT Complexes Antibody (variable)

C_F = Final concentration (always = 1X) of 1X Biotinylated TAT Complexes Antibody solution for the assay procedure

V_T = Total required volume of 1X Biotinylated TAT Complexes Antibody solution for the assay procedure

V_A = Total volume of (X) stock Biotinylated TAT Complexes Antibody

V_D = Total volume of 1X Diluent M required to dilute (X) stock Biotinylated TAT Complexes Antibody to prepare 1X Biotinylated TAT Complexes solution for assay procedures

Calculate the volume of (X) stock Biotinylated Antibody required for the given number of desired wells:

$$(C_F / C_S) \times V_T = V_A$$

Calculate the final volume of 1X Diluent M required to prepare the 1X Biotinylated TAT Complexes Antibody:

$$V_T - V_A = V_D$$

Example:

Δ Note: This example is for demonstration purposes only. Please remember to check your antibody vial for the actual concentration of antibody provided.

C_S = 50X Biotinylated TAT Complexes Antibody stock

C_F = 1X Biotinylated TAT Complexes Antibody solution for use in the assay procedure

V_T = 2,500 μ L (6 well strips or 48 wells)

$$(1X/50X) \times 2,500 \mu\text{L} = 50 \mu\text{L}$$

$$2,500 \mu\text{L} - 50 \mu\text{L} = 2,450 \mu\text{L}$$

9.3.3 First spin the Biotinylated TAT Complexes Antibody vial to collect the contents at the bottom.

9.3.4 Add calculated amount V_A of stock Biotinylated TAT Complexes Antibody to the calculated amount V_D of 1X Assay Diluent M. Mix gently and thoroughly.

9.4 1X SP Conjugate

Spin down the 100X Streptavidin-Peroxidase Conjugate (SP Conjugate) briefly and dilute the desired amount of the conjugate 1:100 with 1X Diluent M.

Δ Note Any remaining solution should be frozen at -20°C .

10. Standard Preparation

- Always prepare a fresh set of standards for every use.
- Prepare serially diluted standards immediately prior to use.
- Any remaining standard should be stored at -20°C after reconstitution and used within 30 days.
- The following section describes the preparation of a standard curve for duplicate measurements (recommended).

10.1 Reconstitution of the TAT Complexes Standard vial to prepare the 500 pg/mL **Standard #1**.

10.1.1 First consult the TAT Complexes Standard vial to determine the mass of protein in the vial.

10.1.2 Calculate the appropriate volume of 1X Diluent M to add when resuspending the TAT Complexes Standard vial to produce the 500 pg/mL TAT Complexes **Standard #1** by using the following equation:

C_S = Starting mass of TAT Complexes Standard (see vial label)
(ng)

C_F = 500 pg/mL TAT Complexes **Standard #1** final required concentration

V_D = Required volume of 1X Diluent M for reconstitution (μ L)

Calculate total required volume 1X Diluent M for resuspension:

$$(C_S / C_F) \times 1,000 = V_D$$

Example:

Δ Note: This example is for demonstration purposes only. Please remember to check your standard vial for the actual amount of standard provided.

C_S = 600 pg of TAT Complexes Standard in vial

C_F = 500 pg/mL TAT Complexes **Standard #1** final concentration

V_D = Required volume of 1X Diluent M for reconstitution

$$(600 \text{ pg} / 500 \text{ pg/mL}) \times 1,000 = 1,200 \mu\text{L}$$

- 10.2 Allow the reconstituted 500 ng/mL TAT Complexes **Standard #1** to sit for 10 minutes with gentle agitation prior to making subsequent dilutions
- 10.3 Label five tubes #2 – 6.
- 10.4 Add 360 μ L of 1X Diluent M to tube #2 – 6.
- 10.5 To prepare **Standard #2**, add 120 μ L of the **Standard #1** into tube #2 and mix gently.
- 10.6 To prepare **Standard #3**, add 120 μ L of the **Standard #2** into tube #3 and mix gently.
- 10.7 Using the table below as a guide, prepare subsequent serial dilutions.
- 10.8 1X Diluent M serves as the zero standard (0 ng/mL).

Standard #	Volume to dilute (μ L)	Volume Diluent M (μ L)	Mouse TAT Complexes (pg/mL)
1	Step 10.1		500
2	120 μ L Standard #1	360	125
3	120 μ L Standard #2	360	31.25
4	120 μ L Standard #3	360	7.813
5	120 μ L Standard #4	360	1.953
6 (Blank)	N/A	360	0.0

11. Sample Preparation

11.1 Plasma:

Collect plasma using one-tenth volume of 0.1 M sodium citrate as an anticoagulant. Centrifuge samples at 3,000 x g for 10 minutes. Dilute mouse plasma 1:160 with Diluent M and assay; however, user should determine optimal dilution factor depending on application needs. The undiluted samples can be stored at -20°C or below for up to 3 months. Avoid repeated freeze-thaw cycles.

11.2 Cell Culture Supernatants:

Centrifuge cell culture media at 3,000 x g for 10 minutes at 4°C to remove debris. Collect supernatants and assay. If necessary, dilute samples into Diluent M; user should determine optimal dilution factor depending on application needs. The undiluted samples can be stored at -80°C. Avoid repeated freeze-thaw cycles.

Refer to Dilution Guidelines for further instruction.

Guidelines for Dilutions of 100-fold or Greater <i>(for reference only; please follow the insert for specific dilution suggested)</i>	
100x	10000x
4 µl sample + 396 µl buffer (100X) = 100-fold dilution <i>Assuming the needed volume is less than or equal to 400 µl</i>	A) 4 µl sample + 396 µl buffer (100X) B) 4 µl of A + 396 µl buffer (100X) = 10000-fold dilution <i>Assuming the needed volume is less than or equal to 400 µl</i>
1000x	100000x
A) 4 µl sample + 396 µl buffer (100X) B) 24 µl of A + 216 µl buffer (10X) = 1000-fold dilution <i>Assuming the needed volume is less than or equal to 240 µl</i>	A) 4 µl sample + 396 µl buffer (100X) B) 4 µl of A + 396 µl buffer (100X) C) 24 µl of A + 216 µl buffer (10X) = 100000-fold dilution <i>Assuming the needed volume is less than or equal to 240 µl</i>

12. Plate Preparation

- The 96 well plate strips included with this kit are supplied ready to use. It is not necessary to rinse the plate prior to adding reagents.
- Unused well plate strips should be returned to the plate packet and stored at 4°C.
- For statistical reasons, we recommend each sample should be assayed with a minimum of two replicates (duplicates).
- Well effects have not been observed with this assay. Contents of each well can be recorded on the template sheet included in the Resources section.

13. Assay Procedure

- Equilibrate all materials and prepared reagents to room temperature prior to use.
 - We recommend that you assay all standards, controls and samples in duplicate.
- 13.1** Prepare all reagents, working standards and samples as instructed. Equilibrate reagents to room temperature before use. The assay is performed at room temperature (18-25°C).
 - 13.2** Remove excess microplate strips from the plate frame and return them immediately to the foil pouch with desiccant inside. Reseal the pouch securely to minimize exposure to water vapor and store in a vacuum desiccator.
 - 13.3** Add 50 µL of TAT Complexes standard or sample per well. Cover wells with a sealing tape and incubate for two hours. Start the timer after the last sample addition.
 - 13.4** Wash five times with 200 µL of 1X Wash Buffer manually. Invert the plate each time and decant the contents; tap it 4-5 times on absorbent paper towel to completely remove the liquid. If using a machine wash, six times with 300 µL of 1X Wash Buffer and then invert the plate, decant the contents; tap it 4-5 times on absorbent paper towel to completely remove the liquid.
 - 13.5** Add 50 µL of 1X Biotinylated TAT Complexes Antibody to each well and incubate for two hours.

- 13.6 Wash microplate as described above.
- 13.7 Add 50 μ L of 1X SP Conjugate to each well and incubate for 30 minutes. Turn on the microplate reader and set up the program in advance.
- 13.8 Wash microplate as described above.
- 13.9 Add 50 μ L of Chromogen Substrate per well and incubate for about 15 minutes or till the optimal blue color density develops. Gently tap plate to ensure thorough mixing and break the bubbles in the well with pipette tip.
- 13.10 Add 50 μ L of Stop Solution to each well. The color will change from blue to yellow.
- 13.11 Read the absorbance on a microplate reader at a wavelength of 450 nm immediately. If wavelength correction is available, subtract readings at 570 nm from those at 450 nm to correct optical imperfections. Otherwise, read the plate at 450 nm only. Please note that some unstable black particles may be generated at high concentration points after stopping the reaction for about 10 minutes, which will reduce the readings.
- 13.12 Analyze the data as described below.
 - 13.12.1 Calculate the mean value of the duplicate or triplicate readings for each standard and sample.
 - 13.12.2 To generate a standard curve, plot the graph using the standard concentrations on the x-axis and the corresponding mean 450 nm absorbance (OD) on the y-axis. The best-fit line can be determined by regression analysis using log-log or four-parameter logistic curve-fit.
 - 13.12.3 Determine the unknown sample concentration from the Standard Curve and multiply the value by the dilution factor.

14. Typical Data

Typical standard curve – data provided for demonstration purposes only. A new standard curve must be generated for each assay performed.

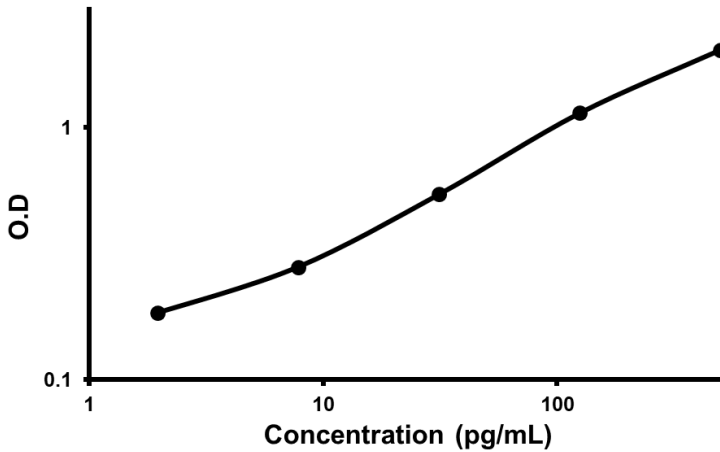


Figure 1. Example of TAT Complexes standard curve. The standard curve was prepared as described in Section 10. Raw data values are shown in the table. Background-subtracted data values (mean +/- SD) are graphed.

15. Typical Sample Values

SENSITIVITY –

The minimum detectable dose of TAT Complexes is typically 1.6 pg/mL.

PRECISION –

	Intra-assay Precision	Inter-Assay Precision
CV (%)	4.1	9.8

RECOVERY –

Standard Added Value	7.8 - 125 pg/ml
Recovery (%)	88-113 %
Average Recovery (%)	97 %

16. Assay Specificity

This kit recognizes mouse TAT Complexes in plasma and cell culture supernatants.

17. Species Reactivity

Species	% Cross Reactivity
Canine	None
Bovine	None
Monkey	10
Rat	10
Swine	10
Rabbit	None
Human	None
Mouse	100

Please contact our Technical Support team for more information.

18. Troubleshooting

Problem	Cause	Solution
Poor standard curve	Improper standard dilution	Confirm dilutions made correctly
	Standard improperly reconstituted (if applicable)	Briefly spin vial before opening; thoroughly resuspend powder (if applicable)
	Standard degraded	Store sample as recommended
	Curve doesn't fit scale	Try plotting using different scale
Low signal	Incubation time too short	Try overnight incubation at 4°C
	Target present below detection limits of assay	Decrease dilution factor; concentrate samples
	Precipitate can form in wells upon substrate addition when concentration of target is too high	Increase dilution factor of sample
	Using incompatible sample type (e.g. serum vs. cell extract)	Detection may be reduced or absent in untested sample types
	Sample prepared incorrectly	Ensure proper sample preparation/dilution

Problem	Cause	Solution
Large CV	Bubbles in wells	Ensure no bubbles present prior to reading plate
	All wells not washed equally/thoroughly	Check that all ports of plate washer are unobstructed wash wells as recommended
	Incomplete reagent mixing	Ensure all reagents/master mixes are mixed thoroughly
	Inconsistent pipetting	Use calibrated pipettes and ensure accurate pipetting
	Inconsistent sample preparation or storage	Ensure consistent sample preparation and optimal sample storage conditions (eg. minimize freeze/thaws cycles)

Problem	Cause	Solution
High background/ Low sensitivity	Wells are insufficiently washed	Wash wells as per protocol recommendations
	Contaminated wash buffer	Make fresh wash buffer
	Waiting too long to read plate after adding STOP solution	Read plate immediately after adding STOP solution
	Improper storage of ELISA kit	Store all reagents as recommended. Please note all reagents may not have identical storage requirements.
	Using incompatible sample type (e.g. Serum vs. cell extract)	Detection may be reduced or absent in untested sample types

19. Notes

Technical Support

Copyright © 2022 Abcam. All Rights Reserved. The Abcam logo is a registered trademark. All information / detail is correct at time of going to print.

For all technical or commercial enquiries please go to:

www.abcam.com/contactus

www.abcam.cn/contactus (China)

www.abcam.co.jp/contactus (Japan)